

43'

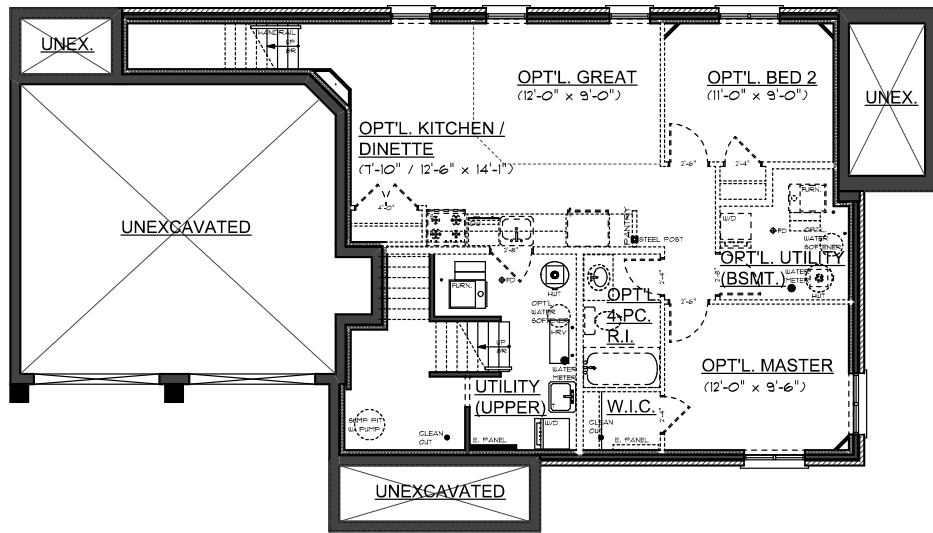


3 Bedroom  
2 Storey

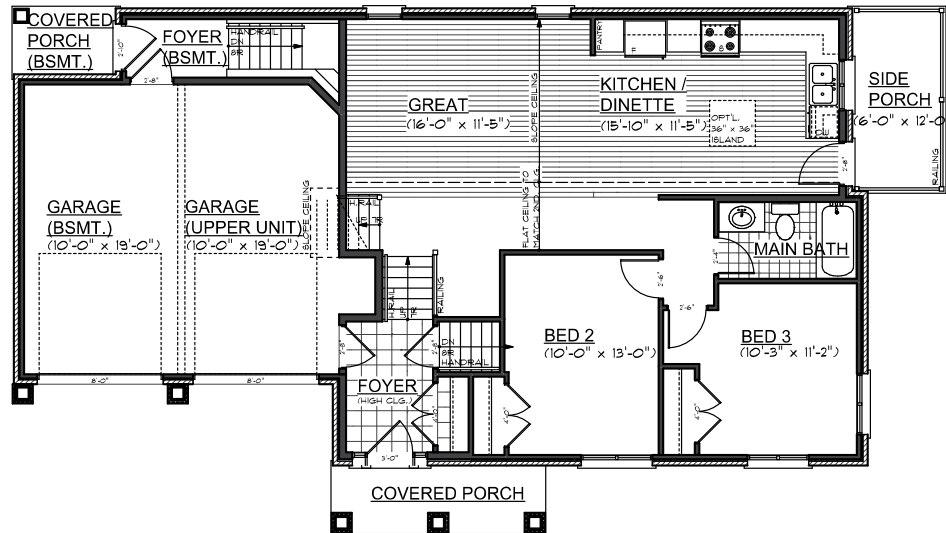
1421 sq. ft.

# Washington CORNER

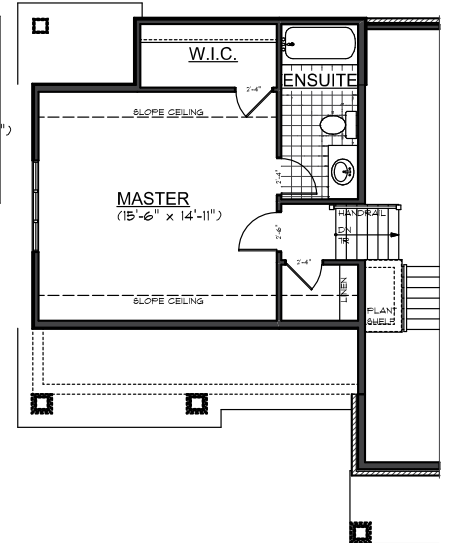
Illustrations and renderings are an artist's concept and may show optional features which may not be included in the base price. E. & O. E.



**BASEMENT FLOOR PLAN**



**MAIN FLOOR PLAN**  
SQ. FT. = 1007



**SECOND FLOOR PLAN**  
SQ. FT. = 414

NAME \_\_\_\_\_  
 LOT No. \_\_\_\_\_  
 STREET \_\_\_\_\_

- BRICK FRONT MAIN FLOOR
- BRICK MAIN FLOOR COMPLETE  
 (EXCLUDING ABOVE OPENINGS)  
 \* IF BRICK IS SELECTED IN LIEU OF VINYL SIDING, ROOM SIZES WILL BE ADJUSTED.

JUNE 18, 2010

Specifications and plans are subject to change without notice. E. & O.E.  
 Actual usable floor space may vary from stated floor area.  
 All sizes are approximate.  
 Illustrations depicted are an artists concept of the completed building only.  
 Illustrations may show optional features which may not be included in the base price.  
 Builder reserves the right to alter or reverse plans.  
 Bulkheads and boxing may be required.  
 Ask your sales representative for more information.  
 Ceiling heights vary from plan to plan.  
 Stair configuration will change with any change to ceiling heights.  
 Mechanical equipment locations may change as per site conditions.  
 Do not scale drawings.



**WASHINGTON (CORNER)**  
**TOTAL SQ. FT. = 1421**  
 (O.T.A. SQ. FT. = \_\_)

**PLEASE NOTE:**  
 The Washington will be built using Eastforest Homes specs and features.  
 For more info on specs and features please visit [www.eastforesthomes.com](http://www.eastforesthomes.com)

**EASTFOREST HOMES LTD.**  
 KITCHENER, ONTARIO (519) 742-2846  
**43' PRODUCT**